

INE-F904DC / X903DC / X803DC / INE-W720DC Series map 2020/12 and Navi firmware update procedure



Map and Navi Firmware Update Procedure

Please check the **Audio Firmware Version** on your device first. If your **Audio Firmware Version** is **NOT 1.4001.1.4001.1.4001** or higher, please update your **Audio Firmware** before. Check Audio "Firmware Version" in Setup: → General → About → **Firmware Version**.

The map 2020/12 and Navi firmware can be updated with only one USB device. First, please download the "2020-12_camperMAP.zip" and follow the instructions. The INE-F904DC / X903DC / X803DC / INE-W720DC can be updated via USB connection (see connection diagram below). Before starting the update, please check following notes. The download file is compressed in zip format. The contents of the download need to be extracted to a freshly formatted USB device (FAT32). The update takes 40 to 50 minutes.

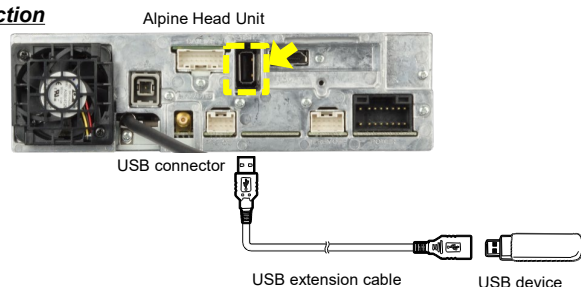
Update file contents / storage place (for all type of units)

	Name	Größe	Typ	Änderungsdatum
> Schnellzugriff				
> Dieser PC				
▼ USB-Laufwerk (F:)				
	NE000000		Dateiordner	04.08.2021 16:29
	NE00035A		Dateiordner	04.08.2021 12:31
	NE00036A		Dateiordner	04.08.2021 12:31
	NE00040A		Dateiordner	04.08.2021 12:31
	NE00041A		Dateiordner	04.08.2021 12:31

Notes

- Do NOT use the compressed file for update, otherwise the Unit cannot recognize the files.
- Do NOT change folder name and file names, otherwise the Unit cannot recognize the files.
- Do NOT store the folder inside another folder.
- Do NOT store any other folders/files on the USB device.
- Do NOT remove the USB device while updating.
- Do NOT update while driving.
- Do NOT press any buttons while updating.
- Do NOT turn off vehicle's ignition or head unit's power switch while updating.
Modern vehicles will shut down the ignition (ACC) after some time if the engine is not running.
If you are not sure if this applies to your car, leave the engine idling while the update is in progress.

Connection

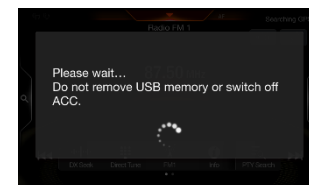
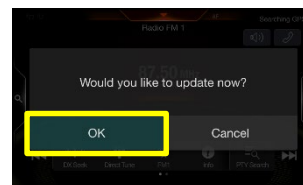


Install Navi firmware and map update

- 1 Store the downloaded and extracted files "2020-12_camperMap.zip" on the empty USB device in the Root Folder (see left figure).
- 2 Connect USB device to USB connector of the Alpine Head Unit. Please see lower left figure.

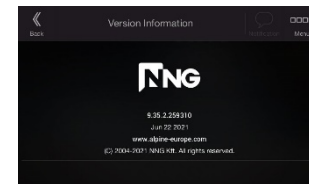
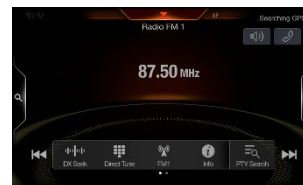


- 3 Press "OK" button when update message appears on the screen. The process will now install the new map data to your Alpine Head Unit.



Update will be completed in around 40 minutes.

- 4 The new map data and navigation application is loaded successfully when your Alpine Head Unit restarts automatically.



- 5 Remove the USB device from Alpine Head Unit.
- 6 Check the "Navi Firmware" version by pushing Navigation: → Information → About → Version Information. The new Navi Firmware version is **9.35.2.259310, Jun 22 2021**
- 7 Check "Map Version" by pushing Navigation: → Information → About → Content → Maps. If "Map Version" has changed to: "... 2020.12", this map update procedure has been successful.